



# Patchwords



July 2021



## PRESIDENT'S LETTER

Hello Fellow Quilters,

First, I want to say thank you to everyone who came out to our last meeting. I think we should all give ourselves a hand for getting out.

I would like to let everyone know that we are still in need of a Historian. If you like to take pictures and keep a scrapbook, we have the job for you.

Our Quilt Show is just around the corner so start getting those quilts ready. I am looking forward to this next chapter.

I have been busy with my Embroidery and Quilting business, and I am working on Charity Quilts for our donations.

until the next meeting please stay safe and try to stay dry.

Respectfully submitted,  
Karen Radcliff  
SABQG President



## July Calendar

**July 14th**  
Board Meeting  
9:30 am

**July 15th**  
6:30pm Social  
7pm Program  
"Patriotic Quilts"  
Carolyn Finlayson  
Bell Hall

**July 21st**  
9am Social  
Hosted by  
"Hummingbees"  
9:30am  
No Program scheduled  
Bell Hall

**July 28th**  
Workday Wednesday  
9am

## In Memoriam



Guild Member  
Ann Vassie passed away  
in May  
We will miss her.



## July Meeting Reminders

- Celebrate our great country by wearing something patriotic!
- For Show n Tell, bring your patriotic quilts and with patriotic designs, as well as table runners, etc.



## Day Meeting Program for July



Karen and I have discussed having a day meeting program in July. I have checked with several members but July seems to be a time when many of us are looking forward to family visits due to COVID.

We have decided that a program will not be presented for the day meeting.

We will continue our day programs in August.

Your understanding is appreciated.

Thanks,  
Barbara Tillman  
1st Vice President

## Night Meeting Program for July



We are having a program for the night meeting, it will be on "Patriotic Quilts".

Member please bring your favorite patriotic quilts to share and wear your favorite patriotic outfit.

Thank you,  
See you then,  
Carolyn Finlayson  
2nd Vice President



## SABQG Program meeting June 16, 2021

Call to Order: President Karen Radcliff called the General meeting to order at 9:36 am and led the members in the pledge of allegiance. **Hospitality** – Alana Yuratich thanked the Happy Scrappers bee for bringing the refreshments today, also thanked Aiking Osborne for hosting Sit-n-Stitch last week, there are still openings available to sign up for the General Meeting refreshments and monthly Sit-n-Stitch. Alana announced selection of items donated to the guild by Ann Vassie's family in the back of the room. There are pictures of other items that are available for purchase. **Membership** – Linda Kelley announced 51 members attending, yearly dues of \$25 are to be paid this month. **Sunshine** – Linda Tew presented cupcakes to those members with June birthdays, reminded members to call or text with member updates. No emails please. **Librarian** – Loretta Akerlind reminded members about website with a catalogue of the books available for checkout, she was pleased to find that the webpage also sends late notice reminders. Linda Kelley says she loves the new library system. **Beekeeper** – Edyth Brown – There are currently 10 hives with 74 members. Several of these members are in more than one hive. **Community Service:** Janet Bell – Catholic Charities sent a note of thanks for donated item. SIM State Veterans Nursing Home would be pleased to have bed quilts made. Approximately 64-65" X 77-80" with no pillow tucks.

### June Attendance

**June 16th**  
52 members  
3 new members

**June 17th**  
20 members  
4 guests



### SUNSHINE

Please contact me when a member has an illness, loss or just something to celebrate

Linda Tew

Please only text or call

There was a large amount of material that Janet Bell and Loretta Akerlind brought from the storage unit to be used for this project. We will supply quilts to Sims as they are donated.

We cannot provide quilts for all the beds at once. Please make the quilts as masculine as possible. As the majority of the residents are male. **Education:** Sarah Hutton – 101 Beginners classes are going well. She had 101 members bring in the last block made from the paper piecing class for show and tell. Sarah also announced that the appliqué class will be broken out into 2 sessions, hand appliqué and machine appliqué. **Events:** No report. **Ewords:** Kathye Deluca - sent out a reminder for this month's newsletter. If you did not receive an email reminder, please give her a call to make sure she has a correct email address. Also, she will start sending out weekly reminders for any guild events that might be happening the following week.

**Historian:** No Report – We need a member to become the historian for the guild.

If interested, please let President Karen Radcliff know. **Publicity:**

Marsha Michel will continue to put pictures and notices in the newspaper **Newsletter:**

Deadline for July newsletter entries is June 23. **Quilt Show:** Jo-Ellen Rogers & Beverly Pierzchala – Beverly discussed the Instruction & Regulation form for the quilt show which is on the SABQG website, that the Quilt Show is only for guild members quilts. This year's theme is Nine Patch. The sub committees for the Quilt Show are Hospitality: Alan



## HOSPITALITY

We do not have a scheduled Sit 'n Stitch for the month of July, anyone who might be interested, please give me a call.

The refreshments for the July meeting will be hosted by the Humming Bees!

The month of August and March are still open. As always, if you have a small number in your Bee, I can always help you with refreshments.

Stay sweet, safe and cool...lazy days of summer are fast approaching.

Alana 🧐

Yuratch, Boutique: Betty Marler, Opportunity Quilt: Carolyn Pic, Silent Auction: Marsha Michel & Aiking Osborne. JoEllen and Beverly still need someone to be in charge of the Show Program Booklet. This booklet is given to everyone that has a ticket. It is a beautiful addition to our quilt show. Please let them know if you are interested. Jo-Ellen has been contacting vendors and is getting a good response. Spots are filling up fast. **Program:** Barbara Tillman – Loretta Akerlind – Bi-monthly block will be starting up again. It is a voluntary event that happens every other month. Phyllis Hissong was chosen in this month's block drawing. She will have the opportunity to pick the next block that will be collected in August and its color scheme. Make 2 blocks and one is given to the Community Events program and the other block is put in for the members that completed the blocks for that month. **Tool of the Month:** Kathye Deluca presented the Creative Grid 5" Ruler.

## Community Service

Thank you to all who took fabric to make quilts for vets at Sims Veteran's home.

If you could, please return completed quilts, it would be greatly appreciated. Of course, if you return a finished top others have offered to quilt them.

Thank you,  
Janet Bell

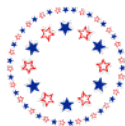
Sims Bed size requested 64"x  
76" (range)

Charity quilts sizes(ranges):  
36" x 36"- newborn  
42" x 42" lap/wheelchair  
45" x 54" bed size



She explained why she likes this tool and showed a pretty quilt made with this tool. This months Program was presented by Alana Yuratich on Appliqué. She explained that appliqué means to join or attach. She spoke of the many types of appliqués and showed many examples from her beautiful collection. She also gave a list of tools that are needed in making an appliqué. **New Business:** Joyce Wood would like help in coming up with a project for the church. For their generosity in letting us rent the space at the church for our various meetings. **Show and Tell:** Jo-Ellen Rogers showed her quilt that has a block that will be in the 101 class. 8 other members brought items to show. **Adjourn:** 11:02 am.

Respectfully submitted Debbie  
Hagen Secretary



## June 17, 2021 Night Meeting St. Andrew Bay Quilt Guild

The meeting was called to order at 7 pm by 2nd Vice President Carolyn Finlayson. We were very pleased to welcome 17 members and 4 guests to the meeting. The members were informed of the actions of the board and the reports that were given at the daytime general meeting. Dates of the quilt show February 11 & 12 were announced along with the date to turn in Applications, Dec. 15. Members were encouraged to get their quilts ready for the show. They were reminded to watch the newsletter for the Guild Challenge (nine patch), the 101 class, Workday Wednesday and the block swap. We were delighted to have Alana present a program on Appliqué, which was enjoyed by all present. The meeting was adjourned following the completion of show and tell.



## Have you questions about entering a quilt into the 2022 Show?

Your newsletter has all the information you need. Please read the rules and guidelines as well as check out the categories. One of the hints we give members prior to sending in their registration forms is to get out your trusty tape measurer and check that you have your size correct. Measure your size AFTER you have finished the quilt. Sizes sometimes change after quilting.

Please remember your label on the back and your hanging sleeve- if you come to Turn In day without these things you will not be able to enter. (Or you will be sewing your sleeve while we are taking in quilts! It has happened!)

We are looking forward to many quilts.

You've had extra months to sew.  
Remember registration forms are due to  
Beverly by December 20th.  
So get busy! And happy quilting!

Beverly

## Change of Address:



Sarah Hough

Janice Roberts

Karen Radcliff



## New Members



Lauren George

Wanda Day

Danica M Geisel

## Returning Members



Rebecca Valle

Janet Adams



## Wanted:

Fabric scraps



Karen Radcliff needs your fabric scraps, any size will do, she's cutting them up to fill pet beds for the animal shelter.

Thanks for your help!



## Block-of-the-Month Swap Block

Phyllis Hissong was the winner of the Anvil Blocks at the June meeting.

To be included in July's drawing, go to the Quilter's Cache Web link for the block instructions. Make two 12" (finished) Goose Creek blocks and bring them to the July 15th night meeting or the July 21st day meeting. For each 2 blocks you hand in, you will get a ticket for the drawing.



<https://www.quilterscache.com/G/GooseCreekBlock.html>

This 12" block is an opportunity to use up some of those scraps!

## SABQG Library



Visit <https://www.librarycat.org/lib/SABQGLIBRARY>.  
to access our library.

## Scrapbook

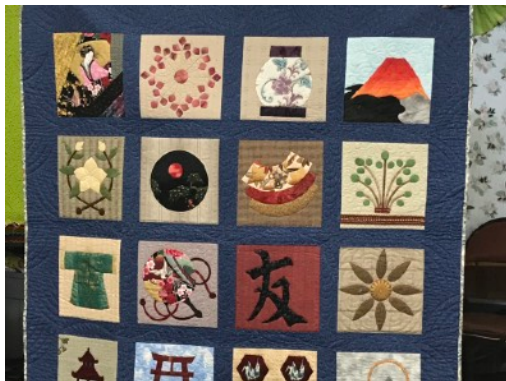


Brenda Marshall (member and Betty Marler's sister) that lives in St Augustine helped her fifth grade students create their graduation quilts. They did the art work. She did the piecing and quilting.

Brenda is a teacher of all! The children were so proud of their quilts.



GREAT PROGRAM THIS MONTH  
THANKS ALANA



## 2021-2022 Board Members

President-Karen Radcliff  
1st V.P. - Barbara Tillman  
2nd V.P.- Carolyn Finlayson  
Secretary-Debbie Hagen  
Night Secretary  
Treasurer-JoAnn Dunn

## Standing Committees

Beekeeper	Edyth Brown
Community	Janet Bell
Education.	Sarah Hutton
Events	Betty Marler
Ewords	Kathye DeLuca
Historian	
Hospitality	Alana Yuratich
Library	Loretta Akerlind
Membership	Linda Kelley
Newsletter	Carolyn Pic
Parliamentarian	Carol Penrod
Publicity	Marsha Michel
Quilt Show	Beverly Pierzchala
	Jo-Ellen Rogers
Sunshine	Linda Tew
Website	Tracy Bell

## Special Committees

Telephone tree  
Fall retreat      Barbara Tillman



ST. ANDREW BAY QUILTERS' GUILD  
QUILT SHOW "QUILTS FROM THE HEART" 2022  
FEBRUARY 11 AND 12, 2022

This annual Quilt Show showcases quilts made by members of the St. Andrew Bay Quilters' Guild. Only active members, having paid their yearly dues as of September 1, 2021 and participated in Guild activities, are eligible to participate in the show. The Quilt Show is a judged competition. Quilts made by nonmembers may be displayed as space allows.

Quilters may enter one quilt per category. If more than one quilt is entered in a category, only one will be judged. The other will be for display. All quilts entered must have been completed within the last five years. THE QUILT SHOW COMMITTEE RESERVES THE RIGHT TO MOVE A QUILT FROM ONE CATEGORY TO ANOTHER IF THE COMMITTEE FEELS THAT THE NEW CATEGORY IS MORE APPROPRIATE. No tied quilts will be judged. A panel is allowed as long as it has been divided into pieces or sections and is part of a larger quilt.

The Theme/Challenge category for 2022 is "TO THE NINES." Quilts in this category must contain nine patch blocks. The nine patch blocks can be incorporated into any quilt pattern. They may be any design and may be in a combination with other blocks. The category "First Time Entry" is for members who have never entered a quilt into our show. The quilt will be critiqued by our judge and will receive a First Entry ribbon.

Each judged category will be eligible for a First, Second, or Third place ribbon as well as an Honorable Mention. Additional awards available are Hand Quilting Excellence, Machine Quilting Excellence, Judge's Choice and Best of Show. Any quilt which has exceptional Handwork (embroidery, for example) will be awarded The Bobbi Award. For the Best of Show and Bedsize/Two Person quilts a ribbon will be awarded to the quilt entrant and to the machine quilter (if applicable). A Viewer's Choice award will be presented based on the vote of show attendees.

All entries must have a 4" sleeve casing attached to the top back of the quilt. All large quilts must have a slit or opening in the middle of the sleeve to facilitate an extra hook for hanging. A secured label must be on the back of the quilt listing the maker's name. DO NOT USE PAPER LABELS. The label must be loosely covered with a piece of fabric. It can be attached with safety pins, but NO STRAIGHT PINS ARE ALLOWED. Each quilt submitted to the Show Committee must be contained in its own fabric bag (no plastic, please) with the quilt makers name on the bag as well.

Quilts are to be delivered to the Quilt Show Committee on Tuesday, February 8, 2022 at the Grace Presbyterian Church, 1415 Airport Rd, (corner of Airport Rd and Lisenby), Panama City between 9:00 – 12:00 Noon. Alternate arrangements need to be made to Beverly Pierzchala at (850) 571-3160 or (850) 896-9510. Quilts are to be picked up after 5:00 p.m. on Saturday, February 12, 2022.

**EACH QUILT ENTERED INTO THE CONTEST MUST HAVE A REGISTRATION FORM.**

Forms are available on the Guild website, [sabqg.org](http://sabqg.org), or from Beverly Pierzchala.

The registration form is due to Beverly Pierzchala by December 20, 2021.

The form may be mailed USPS or emailed to [bpierzchala@att.net](mailto:bpierzchala@att.net).

**\*\*\*\*\*A QUILT HAS A TOP, MIDDLE (BATTING) AND A BACKING, SEWN (QUILTED) TOGETHER.**

## QUILT SHOW 2022 CONTEST CATEGORIES

**BED SIZE QUILT** A quilt intended to cover a bed. Width 63” or more Length 80” or more.

**A. QUILT MADE BY ONE PERSON** Any technique. Hand or machine quilted

**B. QUILT MADE BY TWO PERSONS** Any technique. Hand or machine quilted

**GROUP QUILT**

**C. GROUP QUILT** Any quilt which three or more persons work on the construction or finishing in any way

**WALL SIZE QUILT**

**D. APPLIQUE WALL QUILT** Any size. Appliqué must be the dominant feature of the quilt. It may be hand or machine appliquéd. Hand or machine quilted

**E. SMALL WALL QUILT/PIECED** Dimensions no larger than 160” total. May be hand or machine quilted

**F. LARGE WALL QUILT/PIECED/ONE PERSON** Dimensions larger than 160” total, with the length no larger than 80”. The quilt may be hand or machine quilted **BUT MUST BE COMPLETED BY ONE PERSON**

**G. LARGE WALL QUILT/PIECED/TWO PERSONS** Dimensions larger than 160” total,. The quilt may be hand or machine quilted **BUT COMPLETED BY TWO PERSONS**

**THEME/CHALLENGE “TO THE NINES”**

**H. THEME** The quilt must contain nine patch blocks which may be a part of a larger pattern or design. It may be hand or machine quilted. The quilt should be no larger than a large wall quilt.

**ART/INNOVATIVE QUILT**

**I. ART QUILT** The quilt should be an original work of art, made for display on a wall. No published pattern may be used. Quilt may be made using any technique with the fabrics the primary medium. May be hand or machine quilted

**MINIATURE**

**J.** Any technique may be used (pieced or appliquéd). The miniature is not determined by size alone; it must be a small version of a full size quilt. The maximum block size is 4”. It should measure less than 24” per side. It must be completed by one person.

**FIRST ENTRY**

**K. FIRST ENTRY QUILT** should be the first quilt entered into the Guild Quilt Show. Any technique is allowed. It may not be a panel. For example, a panel with an attached border would not be allowed. May be hand or machine quilted.

**L. OTHER** Any project which does not contain three layers, as in Grandmother’s Flower Garden .Any project with machine embroidery is acceptable. Wool work which does not contain batting or three layers may be in this category. Also, a whole cloth quilt completed by one person fits this category.

**\*\*\*\*\*A QUILT HAS A TOP, MIDDLE (BATTING) AND A BACKING, SEWN (QUILTED) TOGETHER.**

Antique or old family quilts will be displayed as space allows.



ST. ANDREW BAY QUILTERS' GUILD  
REGISTRATION FORM FOR QUILT SHOW FEBRUARY 11 & 12 , 2022

Name of Entrant \_\_\_\_\_

Address \_\_\_\_\_

Telephone \_\_\_\_\_ Email \_\_\_\_\_

Name of Quilt \_\_\_\_\_

Size: Width \_\_\_\_\_ Length \_\_\_\_\_

Contest Category \_\_\_\_\_

Quilt Maker \_\_\_\_\_

Quilted by \_\_\_\_\_ Machine or Hand (circle one)

Description of Quilt/Quilt Story

\_\_\_\_\_  
\_\_\_\_\_  
\_\_\_\_\_  
\_\_\_\_\_  
\_\_\_\_\_

Include any information you would like known about your quilt-your inspiration, for Whom it is made, pattern, piecing or quilting challenges.

If you are using a registered Pattern be sure to acknowledge pattern maker and source. Quilt entries by members are Eligible for the Specialty Ribbons(handwork, machine quilting, etc.)

Entry of quilt acknowledges that St. Andrew Bay Quilters' Guild will take every precaution to protect the quilt but cannot be responsible for acts of nature beyond their control.

DEADLINE FOR ENTRIES IS DECEMBER 20, 2021,

Signature \_\_\_\_\_ Date \_\_\_\_\_

Mail to:  
Beverly Pierzchala  
115 Candlewick Circle  
Panama City, FL 32405  
email: bpierzchala@att.net