



# Patchwords

October 2024

## President's Message

Dear Members,

There is a quote that goes, "I wish every day was Saturday and every month was October." Is it the coolness in the mornings, or the pumpkin pies that make it so? I think it's the abundance of candy corn! Whatever the reason, October is a beautiful month and one thing that's truly important to remember is that it is Breast Cancer Awareness Month. So, do your due diligence, get those mammograms!

We are getting closer and closer to the Quilt Show deadline for our quilts to be turned in, so let's all get going on finishing those quilts to hang so visitors can "oh and ah" at those creations!!

Our membership is growing and new people and new ideas are enriching our Guild. Make sure that those of us who are 'seasoned' with longevity in our Guild, keep that welcoming mat out there so that these talents can enhance SABQG even more!!

Have a safe October, watch out for Goblins! 🍁 🧛 🧛 🧛 🧛  
I am so honored to be your President!

♥️ Alana

### REMINDERS:

Food Drive

Shoes for Shriners

Scissors sharpened at night and day meeting-\$8.00

Teachable Moment on EPPIeing

Get quilts done for the show Alana

Quilt show theme:

"I MUST HAVE FLOWERS, ALWAYS AND ALWAYS!"



## October/November Calendar

**October 2nd**

SEW-cial

**October 9th**

9:30 am Board Meeting  
Rm 202

**October 10th**

6:30 pm Social 7:00 Program  
Bell Hall

**October 16th**

9:00 am Social  
9:30 Program  
Bell Hall

**October 23rd**

Workday Wednesday  
9:00 am  
Bell Hall

**November 1-3rd**

Fall retreat/Laguna Beach

**November 6th**

SEW-cial

**November 13th**

9:30 am Board Meeting  
Rm 202

**November 14th**

6:30 pm  
Thanksgiving Feast  
Bell Hall

**November 20th**

9:00 am Thanksgiving Feast  
Bell Hall

**November 27th**

Workday Wednesday  
9:00 am  
Bell Hall

## Night Guild Members

- Can't wait to see all the October fall challenge blocks. I know you are busy getting them finished.
- Reminder - my long range challenge is due at the November 8<sup>th</sup> meeting for a flower block. It is to be made with a white or white on white background fabric and be any size of at least 4.5" and no larger than 12.5" unfinished block – it can be a square or rectangle block – you can piece, appliqué, embroider, paper piece or any combination you wish. I hope to have enough blocks to make a quilt to put in our Quilt Show in February. Hope to see your blocks in November!

• Jo

## 2024-25 Board Members

President - Alana Yuratich  
1st V.P. - Diane Wishart  
2nd V.P.- Jo Wilbur  
Secretary - Carolyn Finlayson  
Treasurer - Dianne Daigle



## SUNSHINE & SHADOWS

Please contact me when a member has an illness, loss or just something to celebrate  
Text Linda Tew

or e-mail


## Hospitality

- Thank you to the NOT in a Bee Guild membership for all the wonderful refreshments.
- Thanks to all who helped set up and take down the tables and chairs.
- Our hostesses in October will be the Material Girls along with the Sisterhood Bee Groups.
- Please bring enough for 8-10 people.. Hospitality folks are welcome to come by 8:15 am to set up as refreshments start at 9 am.
- Thank you, Georgia Gunn

## CHRISTMAS BLOCK CHALLENGE

Make a 10 1/2" square block with white or white on white back ground. YOU decide what colors you want, any pattern depicting the holiday, due at the Christmas Luncheon 12/14.

Ribbons will be awarded! 1st, 2nd, 3rd, Honorable Mention and Best of Show!!!!

(That should get you in the mood for the Quilt Show!!! )

send newsletter items  
to:

no later than the  
22nd of each month.

## Boutique Items Needed for Quilt Show!!!

Microwave Bowl Cozies

Adult Bibs

Small lap quilts

Hot pads

Fat quarters

Scrap bags

Bags to hold stuff

Baskets to hold stuff

Wallets and coin purses

Crochet children's hats

Cute Easter animals

Crocheted or knitted washcloths

Pin cushions not high price ones

Casserole holders/bowl cozies

Sunglasses or regular glasses case/holder

Christmas items (ornaments, pillows and banners)

Presidents Quilt Block Challenge

Table runners

Place mats

Ribbon

Pencil holders

Scrubbies

Questions? Call Karen Jones or Loretta Akerlind

### Scissor Sharpening

Saber Sharp, scissor sharpening, is coming to the October meeting. They do ALL Brands of scissors, \$8. With any questions contact Alana or Georgia.

Meeting minutes can be found at:

<https://sabqg.org/newsletter/>

## Membership

### Day meeting:

Members 88 Guests 0 New Members 1

### Night Meeting:

Members 25 Guests 1 New Members 1

**Total membership as of 9/18/24:  
189**

### Address change:

Gail Black:

Mary Kramasz:

### New Members:

Deena Self:

Jillian McNeal:

Vickie Williams:

Janis Laycock:

Cindy Straebel-Membership Chair

# Quilt Show 2025

The Quilt Show Entries Form is on our website and some will be at the check-in desk at each meeting. Please turn in your forms as soon as you can. The deadline will be January 8, 2025.

## Baskets for Raffle

We are challenging all Bees to do a Basket this year. Maggie Adams is out of town, so please let me know if your Bee is placing a Basket in the Raffle. We will need a cost value and itemized list of what is in the baskets.

## Silent Auction

Please let Helen Jeroski know if you have any items for the Silent Auction.

## Boutique:

Karen Jones/Loretta Akerlind- please turn in any items you have to these sweet ladies.

All 3 of these money makers must have the information by January 15<sup>th</sup> and items brought to the Fair Grounds the day quilts are turned in for judging.

Opportunity Quilt tickets, postcards and Presale tickets will be available at the October Meeting. I will be attending each night's meeting to facilitate this as well.

Please contact me if you have any questions.

Dianne Daigle

## **Twister Class**

*Because of the impending hurricane scare and the Church working on the locks of all the doors that same Saturday, the Log Cabin Twister class with Rebecca Valle was canceled (9-28). It will be rescheduled again, promise!!! All will be notified as soon as we can get a safe date! Thank you for your understanding! Twister Class*

Anyone who is still interested in attending the second twister class on Nov. 9, please contact me as soon as you can. The rulers and pattern choices need to be ordered. I would like to have them available for the night meeting in October for pickup. If you have expressed interest in the class but have not chosen either the Christmas pattern or the fall pattern, please contact me for your selection. I will only order for those who have paid the \$20 and made their pattern selection. Thank you for your interest in the class. Jo-Ellen Rogers

Food drive I thank all of you who took the time to participate in our annual food drive for Catholic Social Services. In November we will do it again. CSS distributes food to all who apply regardless of religious affiliation. I thank you in advance for your generosity.

## Community Service

Donations delivered recently:


8 receiving blankets, travel pillows, and pillowcases made and delivered by Linda Tew to the Lynnhaven Methodist foster closet. 2 NICU isolette covers, 9 swaddle blankets, and pad inserts made and delivered by Karen Jones to Gulf Coast Hospital. 6 dog beds made and delivered by Rebecca Valle to dog rescues. Thank you very much!

Thank you to quilters who have turned in quilts, blankets, tote bags, and stockings to be donated soon. Thank you to the quilters who attended Workday Wednesday on August 28th!

From your Community Service team,  
Aly, Gerry, Trudy



**Community Services**  
**Current Needs**



Sim's Twin Size Quilts	64" wide x 74" long
Warrior Beach Retreat	Larger than 50" wide x 65" long
Women Shelter Twin Size	64" wide x 74" long
Elder & Disabled Lap Quilts	42" wide x 54" long
Childrens Quilts	42" wide x 54" long
Infant Receiving Blankets	42" wide x 42" long

**October is the last chance to donate gently used shoes to benefit the Shriners children's Hospital. The box will be back at the doors and empty ready to be filled**

## Bee Information

Thank you to everyone who provided Bee information so I could present it to the guild last month. I had such great cooperation getting all the details collected!

Do you want to join a bee? We have nine bees that are welcoming additional members!!

Would you like to start a new, different bee? A special interest bee, such as traveling to other quilt shows? Or maybe learning basic skills? I'd love to help you get your new bee up and running.

Don't know who I am? Just look for the big, floppy yellow hat! Or contact me via information in the guild directory!

Thanks, again for all your support. ❤️

Rebecca Valle  
SABQG Beekeeper

We are so fortunate to have an amazing library of over 160 book covering so many quilting patterns and techniques. Explore what is available for you to check out at:

[www.librarycat.org/lib/SABQGLIBRARY](http://www.librarycat.org/lib/SABQGLIBRARY)

## October Program

October meetings are going to be busy.

\*Gaye Ryon will give the program "What do judges look for in an awarding winning quilt?"

\*Scissor sharpener will be outside in the parking lot. You will need to drop your scissors off before the meeting and pick them up afterwards. Don't forget to put your name on them.

\*Betty Marler will give a brief update on Warrior Retreat.

\*Bring your fall quilts for show and tell.

### THANK YOU

Thank you to the Tiny Stitchers, they created and donated nine Fidget Quilts to the Alzheimer's Alliance and have more in the making. Thanks also goes to Angela Warren for delivering them to the Alliance.

Thanks to the guild members that set up tables for our Annual September Sale, and a big thanks to the members that bought things.

### UFOs

Is this your quilt area? Don't forget to bring your UFO projects to meetings or text Rebekah or me with photos to get them checked off your UFO list

Diane Wishart

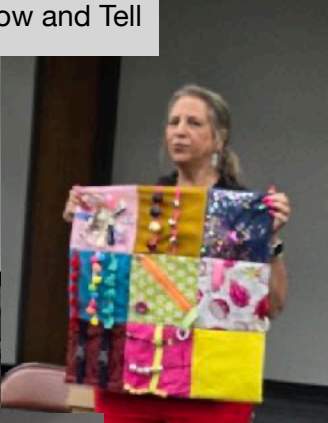
Night Christmas Challenge Winners



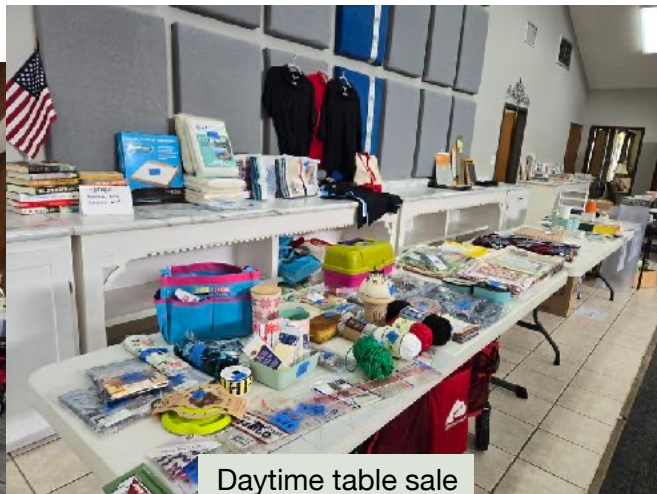
Flower challenge blocks



Show and Tell



Second VP 2023-24 Cindy Smith's quilt squares with contributors



Daytime table sale



Upcoming twister class





